

PREPARED BY DESERT VALLEY TESTING FOR:

7595 E McDonald Dr Suite 140 Scottsdale AZ 85250



DESERT VALLEY TESTING

51 W. Weldon Ave

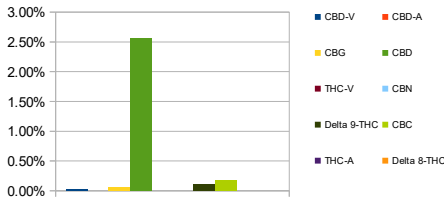
Phoenix, Arizona 85013

480-788-6644

www.desertvalleytesting.com

Sample Information		
Sample Identification	Salve-topical	
Laboratory Number	2019015673	
Batch Number	S-100052119	
Matrix	Topical	
Analyzed Date	07/25/19	
Extraction Date	07/25/19	
Cannabinoid (HPLC)	%	mg/g
Compound		
CBD-V	0.02%	0.19
CBD-A	ND	ND
CBG	0.05%	0.54
CBD	2.56%	25.56
THC-V	ND	ND
CBN	ND	ND
Delta 9-THC	0.11%	1.12
CBC	0.18%	1.84
THC-A	ND	ND
Delta 8-THC	ND	ND
Cannabinoids Total		
Max Active THC	0.11%	1.12
Max Active CBD	2.56%	25.56
T. Active Cannabinoids	2.93%	29.26
Total Cannabinoids	2.93%	29.26
Max Active Ratios		
22.7 :1 CBD to THC		
0.0 :1 THC to CBD		

Cannabinoid %



RS (GCMS-HS)	PPM	RL
Compound		
Propane	NT	5.0
Isobutane	NT	5.0
n-Butane	NT	5.0
Ethanol	NT	5.0
Isopentane	NT	5.0
Acetonitrile	NT	5.0
Acetone	NT	50.0
2-Propanol	NT	5.0
n-Pentane	NT	5.0
n-Hexane	NT	5.0
Chloroform	NT	5.0
Tetrahydrofuran	NT	5.0
Benzene	NT	5.0
Carbon Tetrachloride	NT	5.0
n-Heptane	NT	5.0
Toluene	NT	5.0
Xylenes	NT	10.0

Residuals



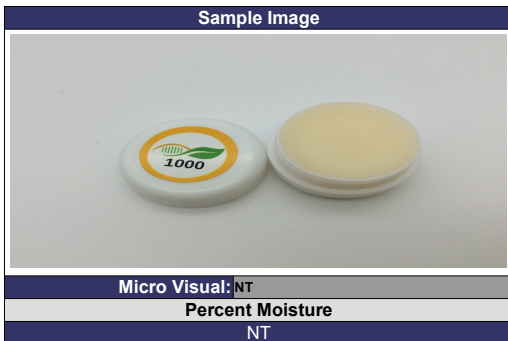
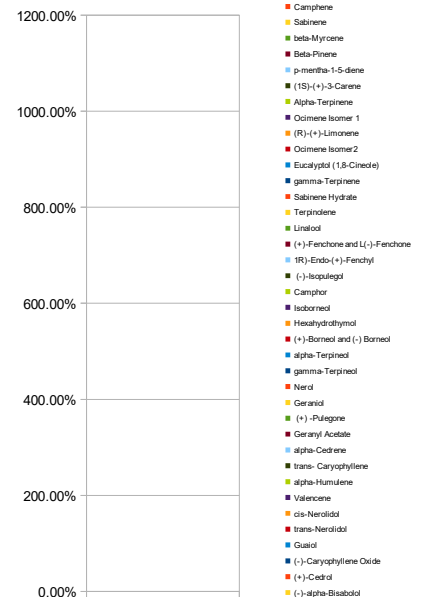
g/medible	NA
mg THC/medible	NA
mg CBD/medible	NA
(mg) total cannabinoids/medible	NA

Metals	PPM	RL
Compound		
Lead	NT	0.018
Arsenic	NT	0.007
Cadmium	NT	0.004
Mercury	NT	0.020

Microbial	CFU/g
Compound	
Enterobacteriaceae	NT
Coliform	NT
Ecoli	NT
Aerobic	NT
Yeast	NT
Mold	NT

Terpene (GC-MS)	%	mg/g
Compound		
alpha-Pinene	NT	NT
Camphene	NT	NT
Sabinene	NT	NT
beta-Myrcene	NT	NT
Beta-Pinene	NT	NT
p-mentha-1-5-diene	NT	NT
(1S)-(+)-3-Carene	NT	NT
Alpha-Terpinene	NT	NT
Ocimene Isomer 1	NT	NT
(R)-(+)-Limonene	NT	NT
Ocimene Isomer 2	NT	NT
Eucalyptol (1,8-Cineole)	NT	NT
gamma-Terpinene	NT	NT
Sabinene Hydrate	NT	NT
Terpinolene	NT	NT
Linalool	NT	NT
(+)-Fenchone and L(-)-Fenchone	NT	NT
1R)-Endo-(+)-Fenchyl	NT	NT
(-)-Isopulegol	NT	NT
Camphor	NT	NT
Isoborneol	NT	NT
Hexahydrothymol	NT	NT
(+)-Borneol and (-) Borneol	NT	NT
alpha-Terpineol	NT	NT
gamma-Terpineol	NT	NT
Nerol	NT	NT
Geraniol	NT	NT
(+) -Pulegone	NT	NT
Geranyl Acetate	NT	NT
alpha-Cedrene	NT	NT
trans-Caryophyllene	NT	NT
alpha-Humulene	NT	NT
Valencene	NT	NT
cis-Nerolidol	NT	NT
trans-Nerolidol	NT	NT
Guaio	NT	NT
(-)-Caryophyllene Oxide	NT	NT
(+)-Cedrol	NT	NT
(-)-alpha-Bisabolol	NT	NT
Total Terpenes	NT	NT

Terpenes %



Micro Visual: NT

Percent Moisture

NT

Chemist: JG

Report Expires: 10/24/19

RL=Reporting Limit

NA=Not Applicable

NT=Not Tested

ND=Non Detected

TNTC=Too Numerous to Count

